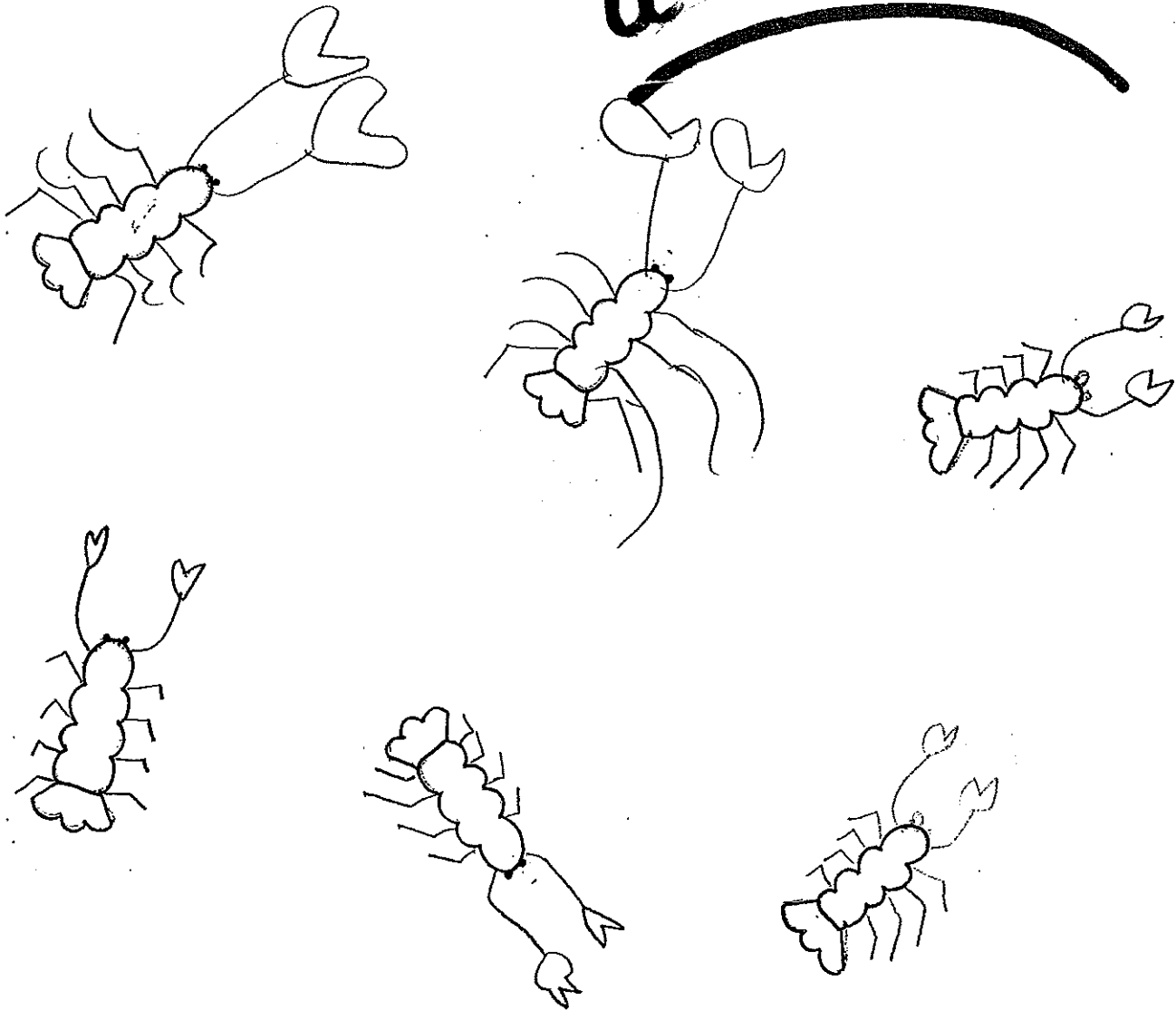


\* L'écrémisse

a 10 pattes avec les pinces.

# Notre excursion

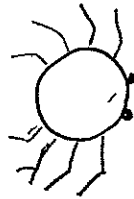
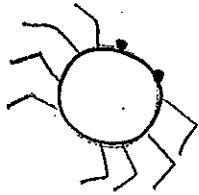
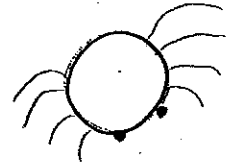
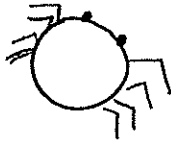
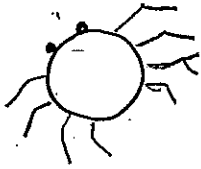
## à RIVEO.



Nous avons appris beaucoup et  
c'était super chouette !

\* l'araignée

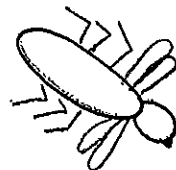
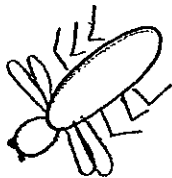
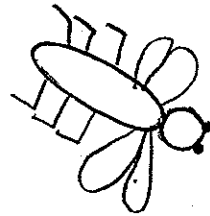
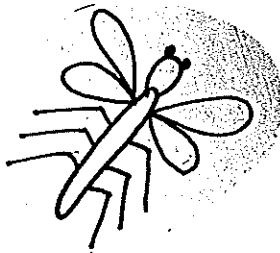
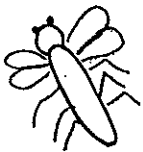
a 8 pattes.



RIVEO se trouve à Hotton. Il faut passer au dessus de l'Ourthe pour y arriver.

\* la libellule

à 6 pattes  
4 ailes



C'était gai mais très fatigant!...